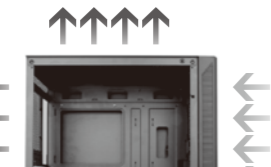


VORTEX

KRX0094



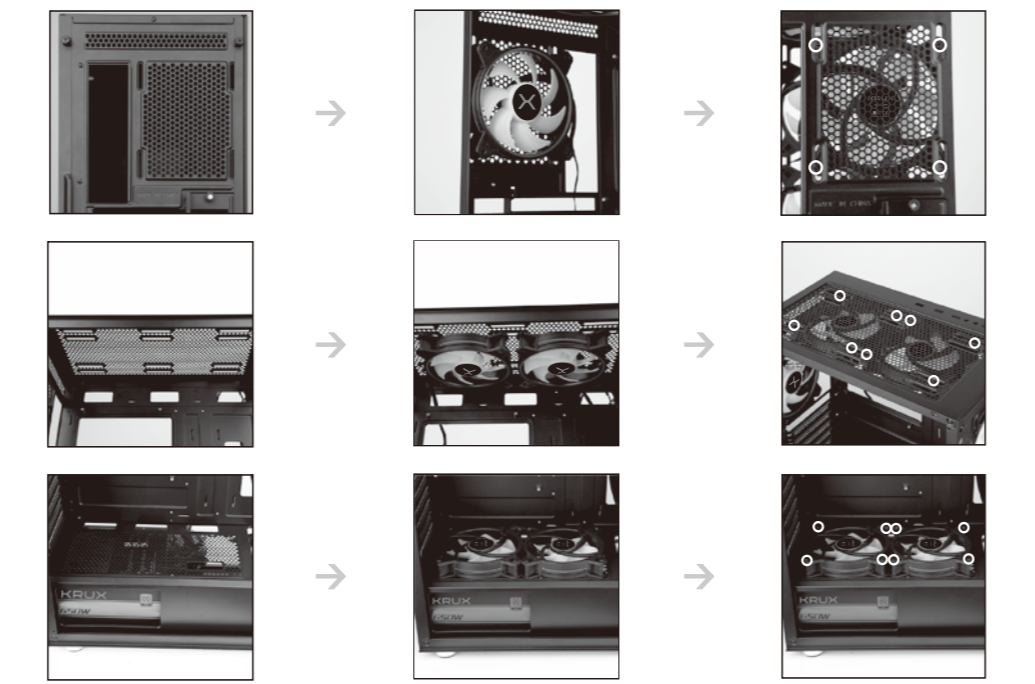
Recommended air flow.

WWW.KRUX.TECH

FANS ASSEMBLING:
 REAR: 1x 120 MM [OPTIONAL]
 TOP: 2x 120 MM / 2x 140 MM [OPTIONAL]
 FRONT: 2x 200 MM [INCLUDED] /
 3x 120 MM [OPTIONAL]

2021.03.12

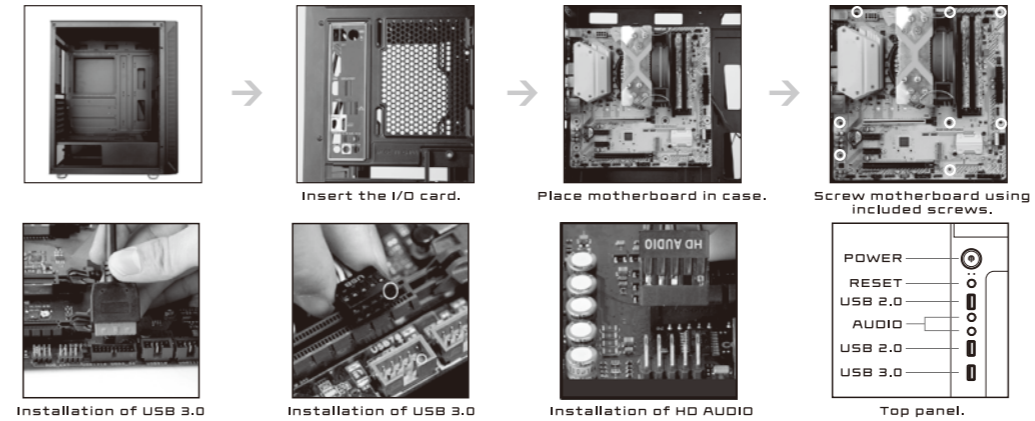
FANS ASSEMBLING [OPTIONAL]



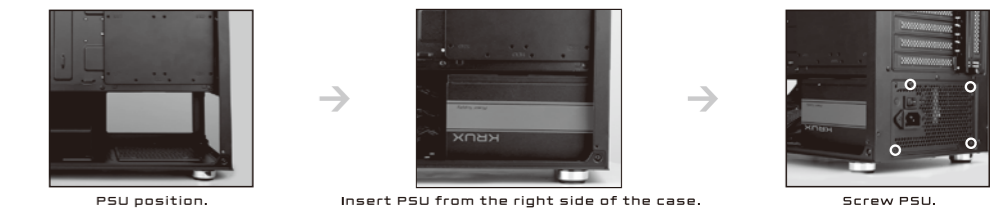
FANS ASSEMBLING [OPTIONAL]



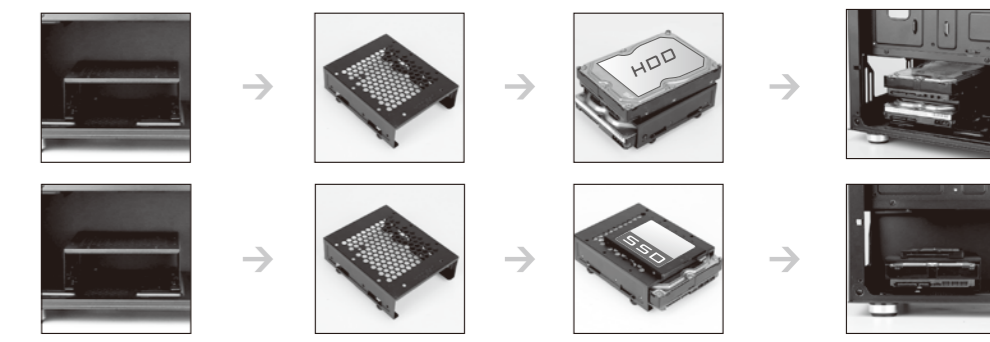
MOTHERBOARD ASSEMBLING





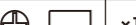

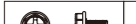


PSU ASSEMBLING



3.5" HDD / 2.5" SSD ASSEMBLING



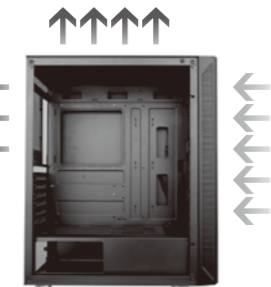
ACCESSORIES

-  x8
CABLE TIES
-  x1
SPEAKER
-  x1
COVER OF COPPER CYLINDER
-  x17
M/B SCREWS /
SSD SCREWS
-  x6
PSU SCREWS
-  x8
HDD SCREWS
-  x3
COPPER CYLINDER

WWW.KRUX.TECH

VORTEX

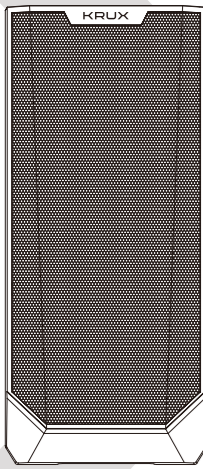
KRX0094



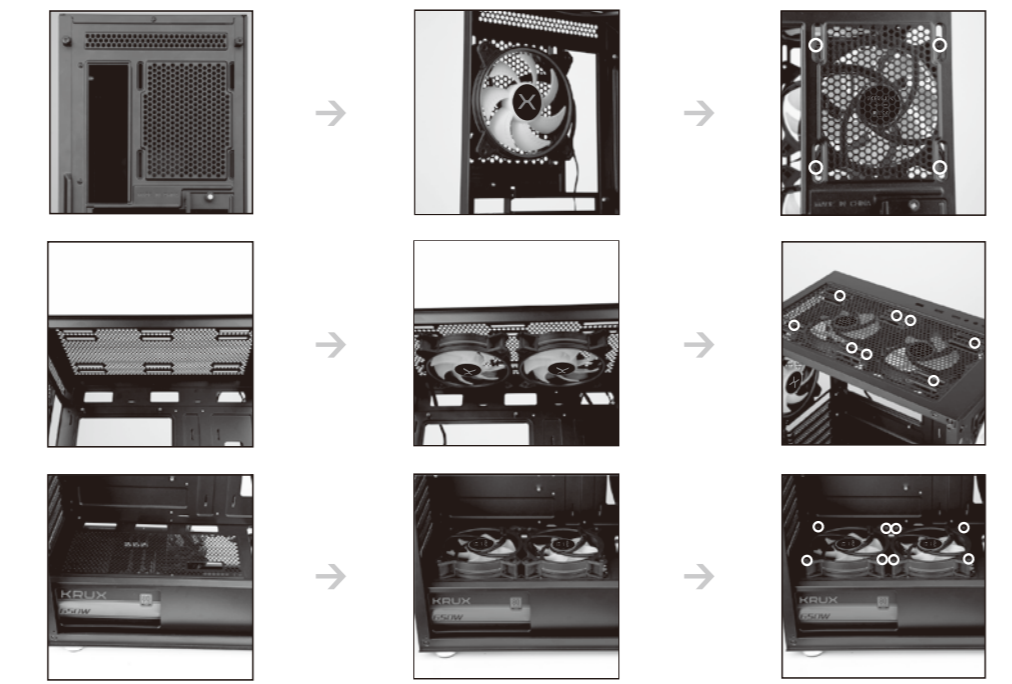
Rekomendowane ustawienie przepływu powietrza.

WWW.KRUX.TECH

WENTYLATORY:
TYŁ: 1x 120 MM [DODATKOWE]
GÓRA: 2x 120 MM / 2x 140 MM [DODATKOWE]
PRZÓD: 2x 200 MM [W ZESTAWIE] /
3x 120 MM [DODATKOWE]



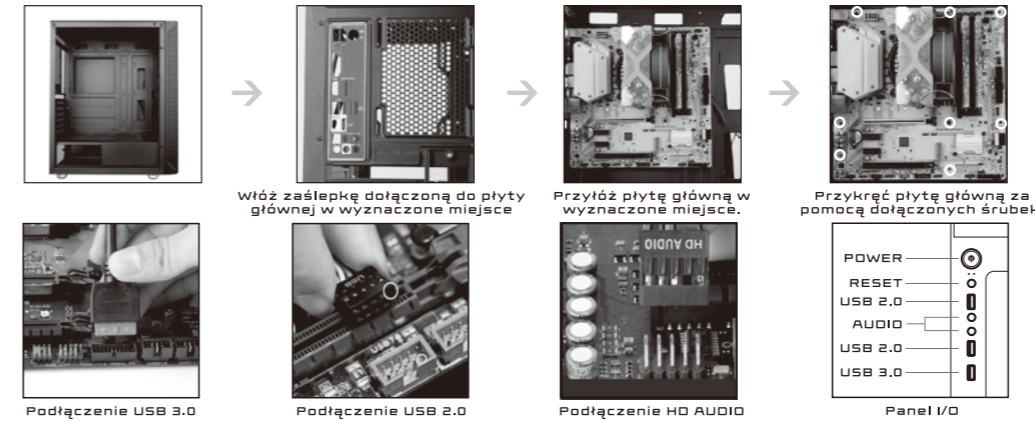
MONTAŻ WENTYLATORÓW [DODATKOWE]



MONTAŻ WENTYLATORÓW [DODATKOWE]



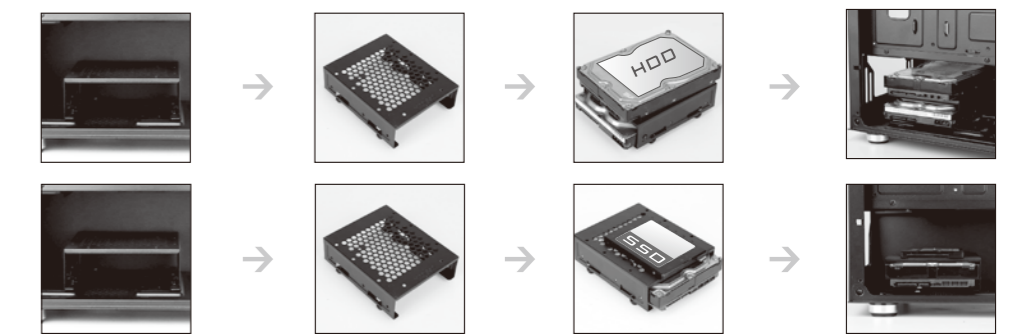
MONTAŻ PŁYTY GŁÓWNEJ










MONTAŻ ZASILACZA



MONTAŻ DYSKÓW 3.5" HDD / 2.5" SSD



AKCESORIA

-  x8
CABLE TIES
-  x1
SPEAKER
-  x1
COVER OF COPPER CYLINDER
-  x17
M/B SCREWS /
SSD SCREWS
-  x6
PSU SCREWS
-  x8
HDD SCREWS
-  x3
COPPER CYLINDER

WWW.KRUX.TECH