

CELLA KRX0116



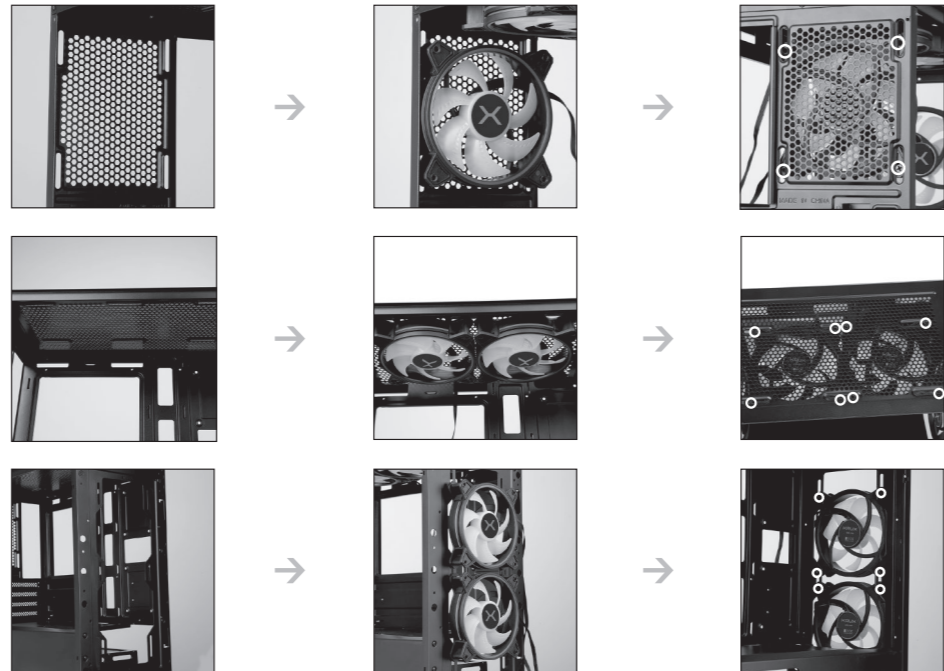
Recommended air flow.

FANS ASSEMBLING:
REAR: 1x 120 MM [INCLUDED]
TOP: 2x 120 MM [OPTIONAL]
FRONT: 2x 120 MM [OPTIONAL]

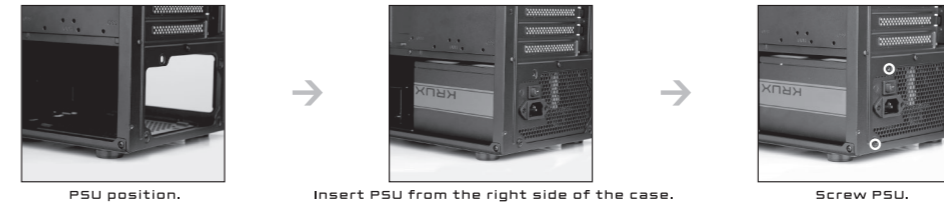
WWW.KRUX.TECH

2021.03.28

FANS ASSEMBLING [OPTIONAL]



PSU ASSEMBLING

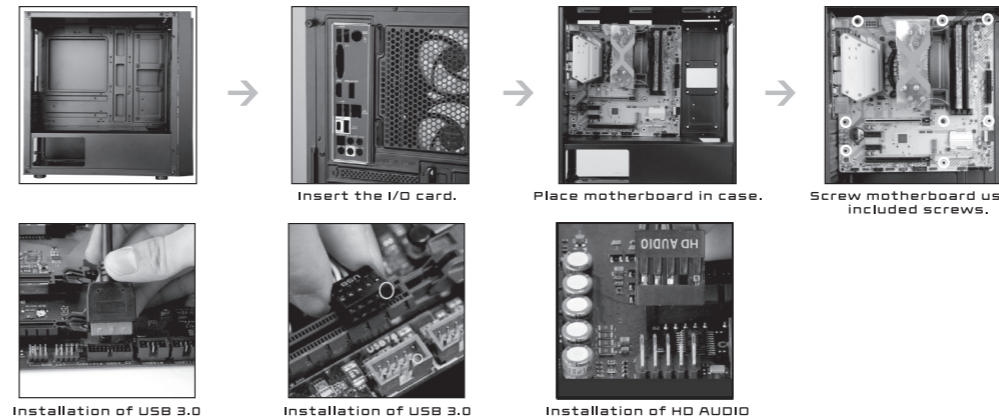


PSU position.

Insert PSU from the right side of the case.

Screw PSU.

MOTHERBOARD ASSEMBLING



Insert the I/O card.

Place motherboard in case.

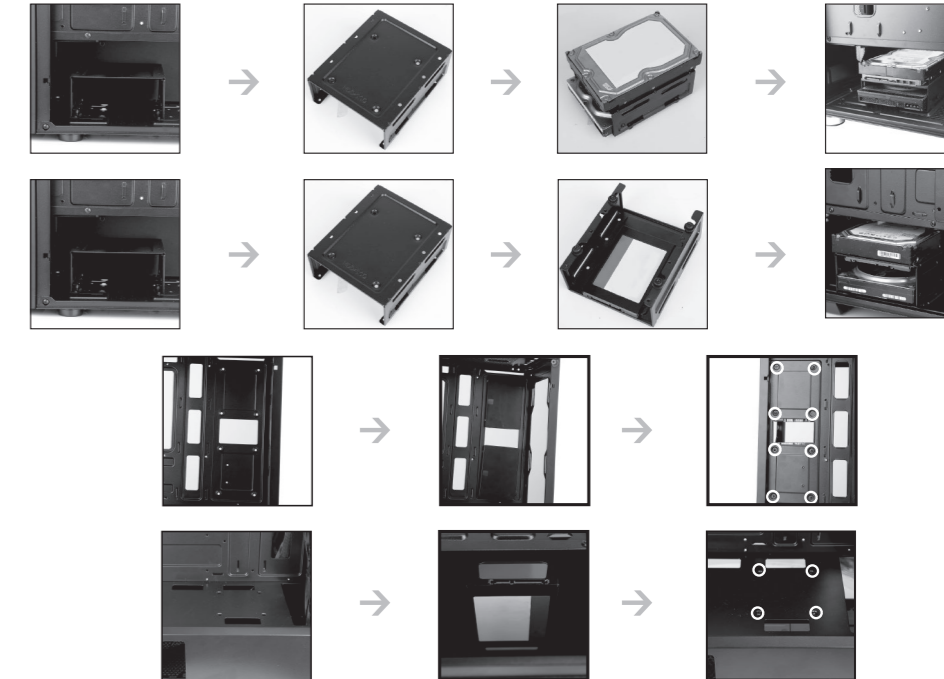
Screw motherboard using included screws.

Installation of USB 3.0

Installation of USB 3.0

Installation of HD AUDIO

3.5" HDD / 2.5" SSD ASSEMBLING



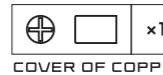
ACCESSORIES



CABLE TIES



COPPER CYLINDER



COVER OF COPPER CYLINDER



M/B SCREWS /
SSD SCREWS



PSU SCREWS



HDD SCREWS

CELLA KRX0116

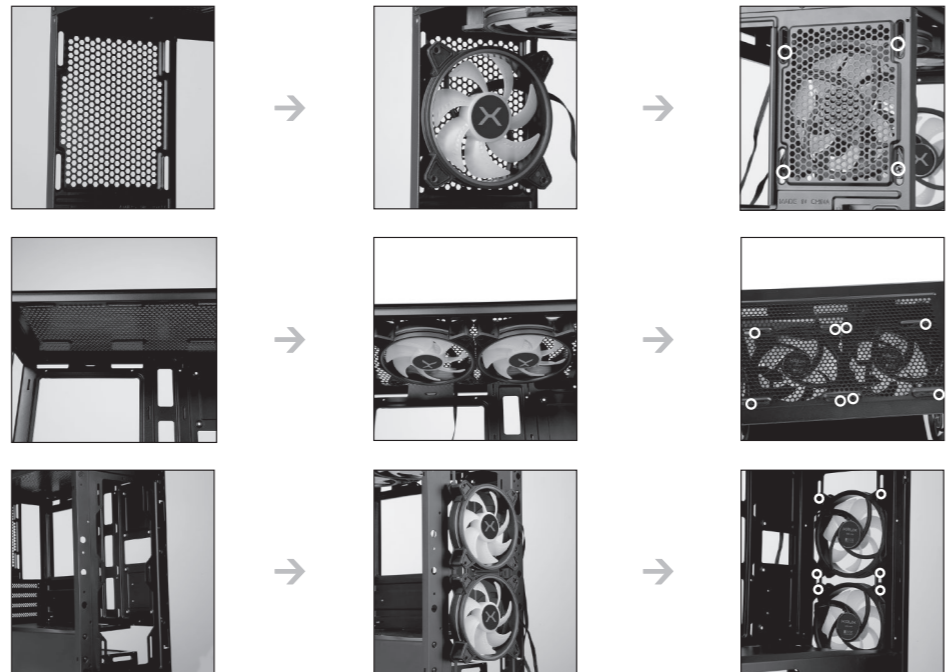


Rekomendowane ustawienie przepływu powietrza.

WWW.KRUX.TECH

WENTYLATORY:
TYŁ: 1x 120 MM [W ZESTAWIE]
GÓRA: 2x 120 MM [DODATKOWE]
PRZÓD: 2x [DODATKOWE]

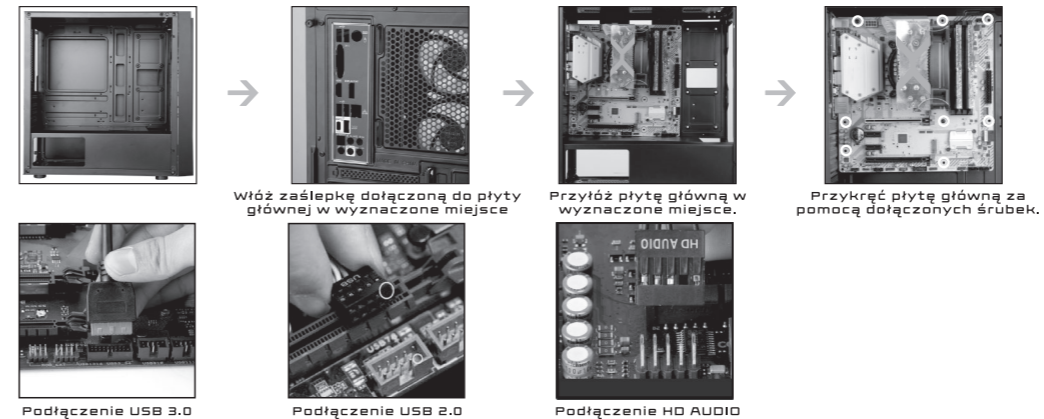
MONTAŻ WENTYLATORÓW [DODATKOWE]



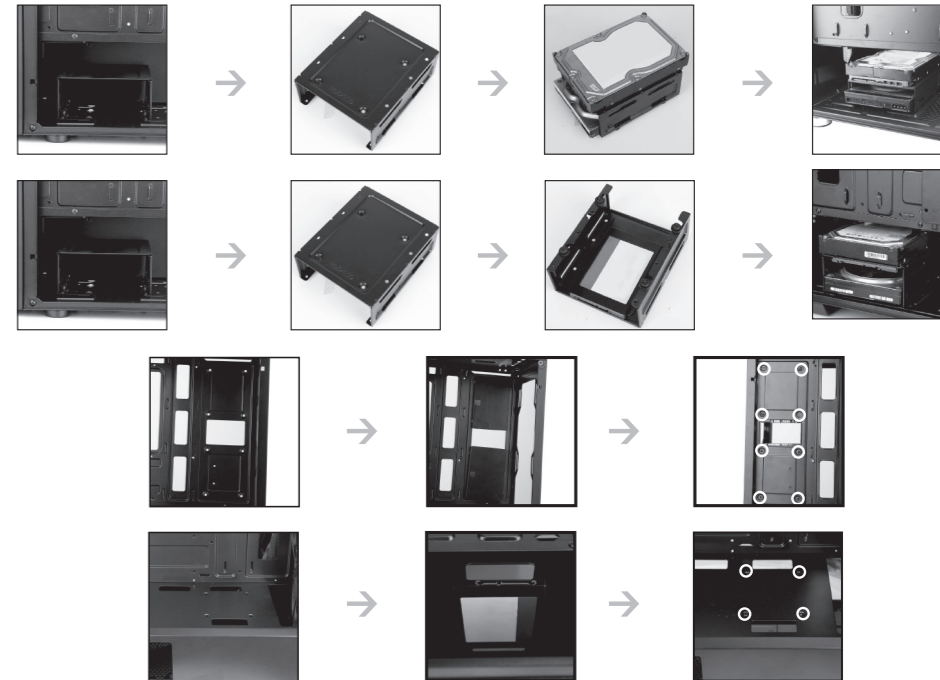
MONTAŻ ZASILACZA



MONTAŻ PŁYTY GŁÓWNEJ



MONTAŻ DYSKÓW 3.5" HDD / 2.5" SSD



AKCESORIA



x4

CABLE TIES



x3

COPPER CYLINDER



x1

COVER OF COPPER CYLINDER



x17

M/B SCREWS /
SSD SCREWS



x6

PSU SCREWS



x8

HDD SCREWS